



Trans Carotid Artery Repair of Patch Angioplasty Pseudoaneurysm

Trent L. Prault, MD FACS

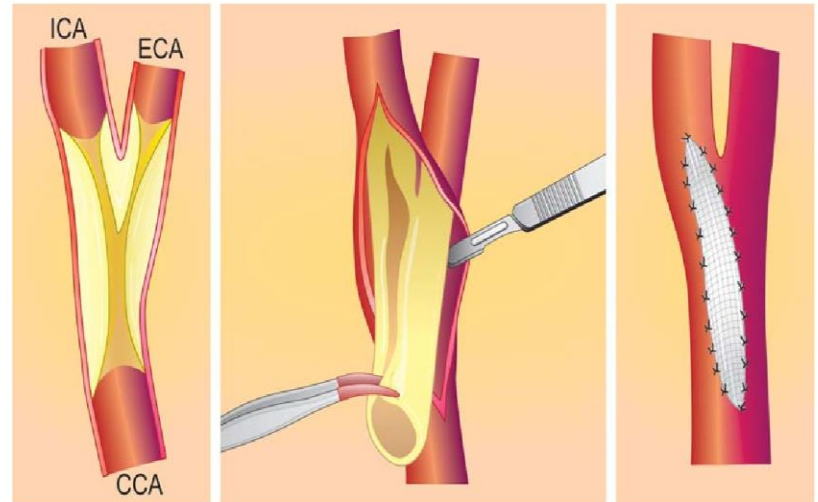
September 8, 2019



DISCLOSURES

- None

“FOUR SCORE AND SEVEN YEARS AGO...”



TRANS CAROTID ARTERY REPAIR OF PATCH ANGIOPLASTY PSEUDOANEURYSM



- Right CEA in 2003 – asymptomatic
- Left CEA in 2005 – amariosis
- 2010 – 3.8cm AAA
- EVAR 2014
- Last seen 2017

TRANS CAROTID ARTERY REPAIR OF PATCH + ANGIOPLASTY PSEUDOANEURYSM

- “83 year old male, 4.8 cm carotid artery aneurysm”



TRANS CAROTID ARTERY REPAIR OF PATCH + ANGIOPLASTY PSEUDOANEURYSM

- Presented with a “fall”
- Multifocal, bilateral infarcts
- CTA – “large pseudoaneurysm measuring 4.9x4.3x6.0 cm of right carotid.
- TEE - Grade IV plaque of the arch
- No systemic signs of infection
- Negative blood cx’s

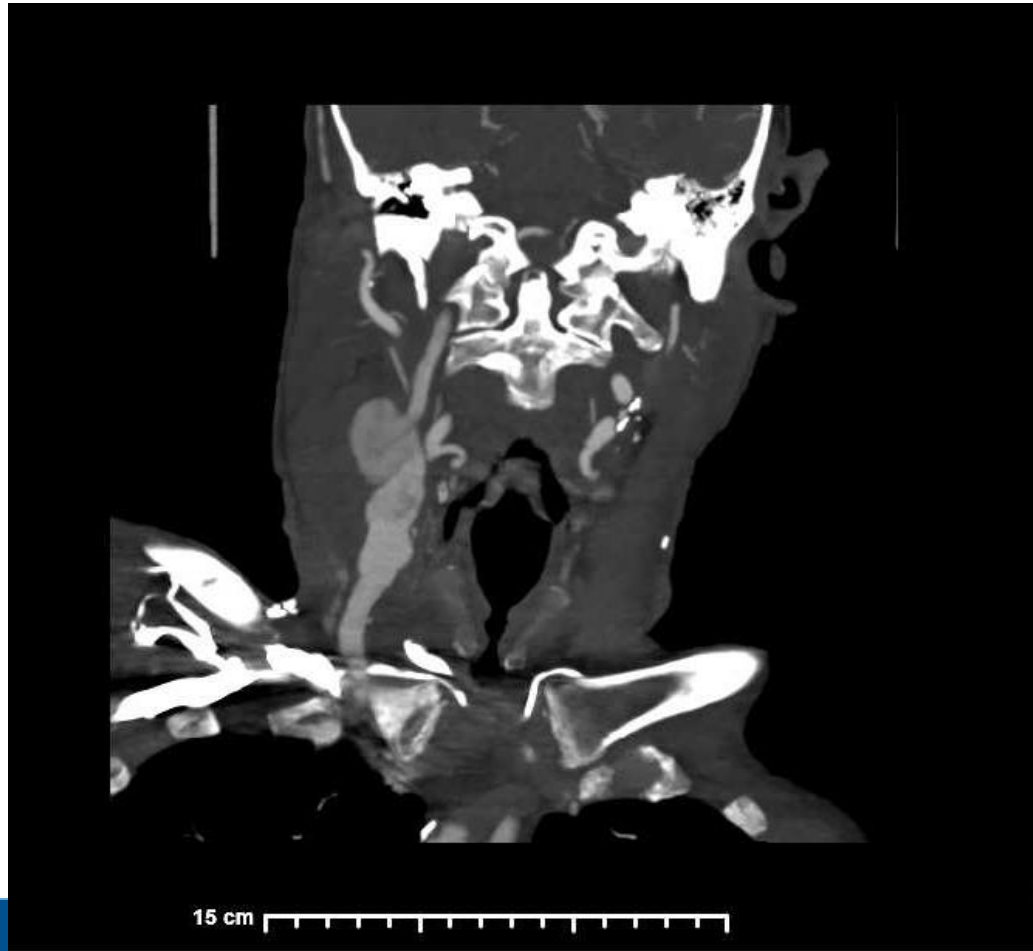
TRANS CAROTID ARTERY REPAIR OF PATCH + ANGIOPLASTY PSEUDOANEURYSM

- HTN, Hyperlipidemia
- Inguinal hernia repair, cataract surgery, PCI
- Crestor, ASA, Synthroid
- 1 PPD

TRANS CAROTID ARTERY REPAIR OF PATCH + ANGIOPLASTY PSEUDOANEURYSM



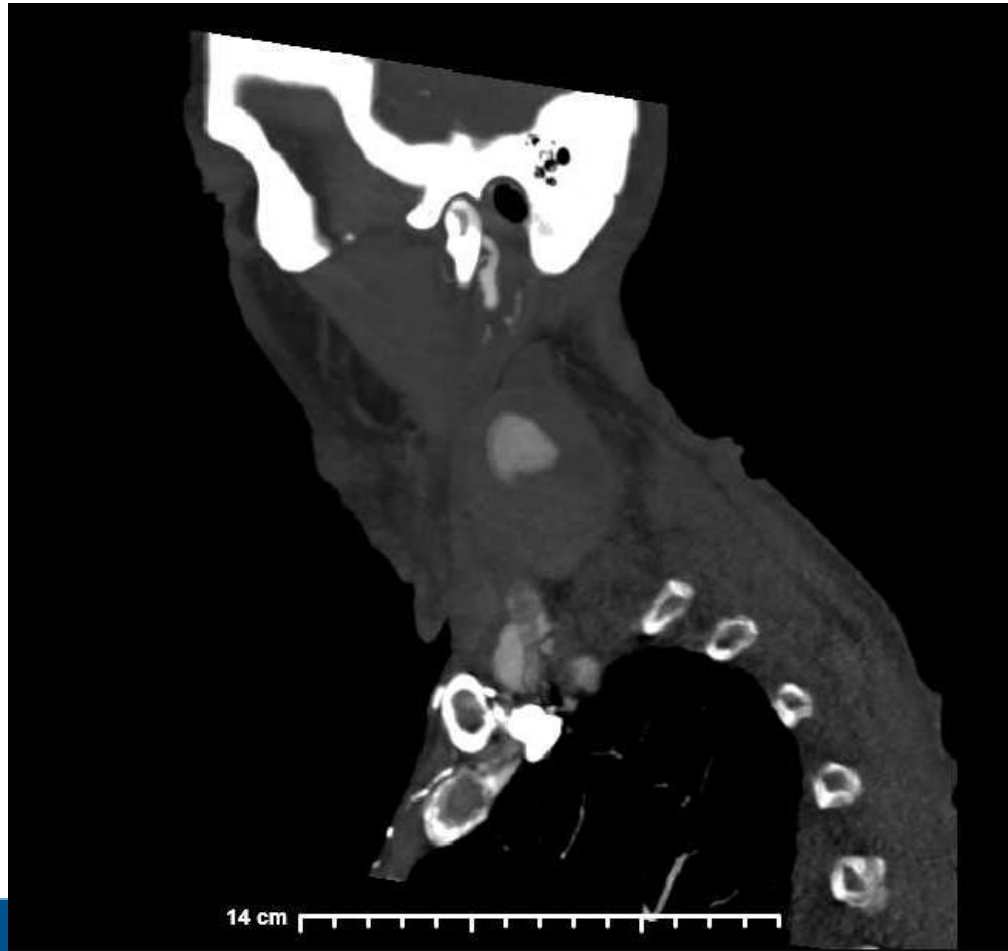
TRANS CAROTID ARTERY REPAIR OF PATCH + ANGIOPLASTY PSEUDOANEURYSM



TRANS CAROTID ARTERY REPAIR OF PATCH + ANGIOPLASTY PSEUDOANEURYSM



TRANS CAROTID ARTERY REPAIR OF PATCH + ANGIOPLASTY PSEUDOANEURYSM



+ TRANS CAROTID ARTERY REPAIR OF PATCH ANGIOPLASTY PSEUDOANEURYSM



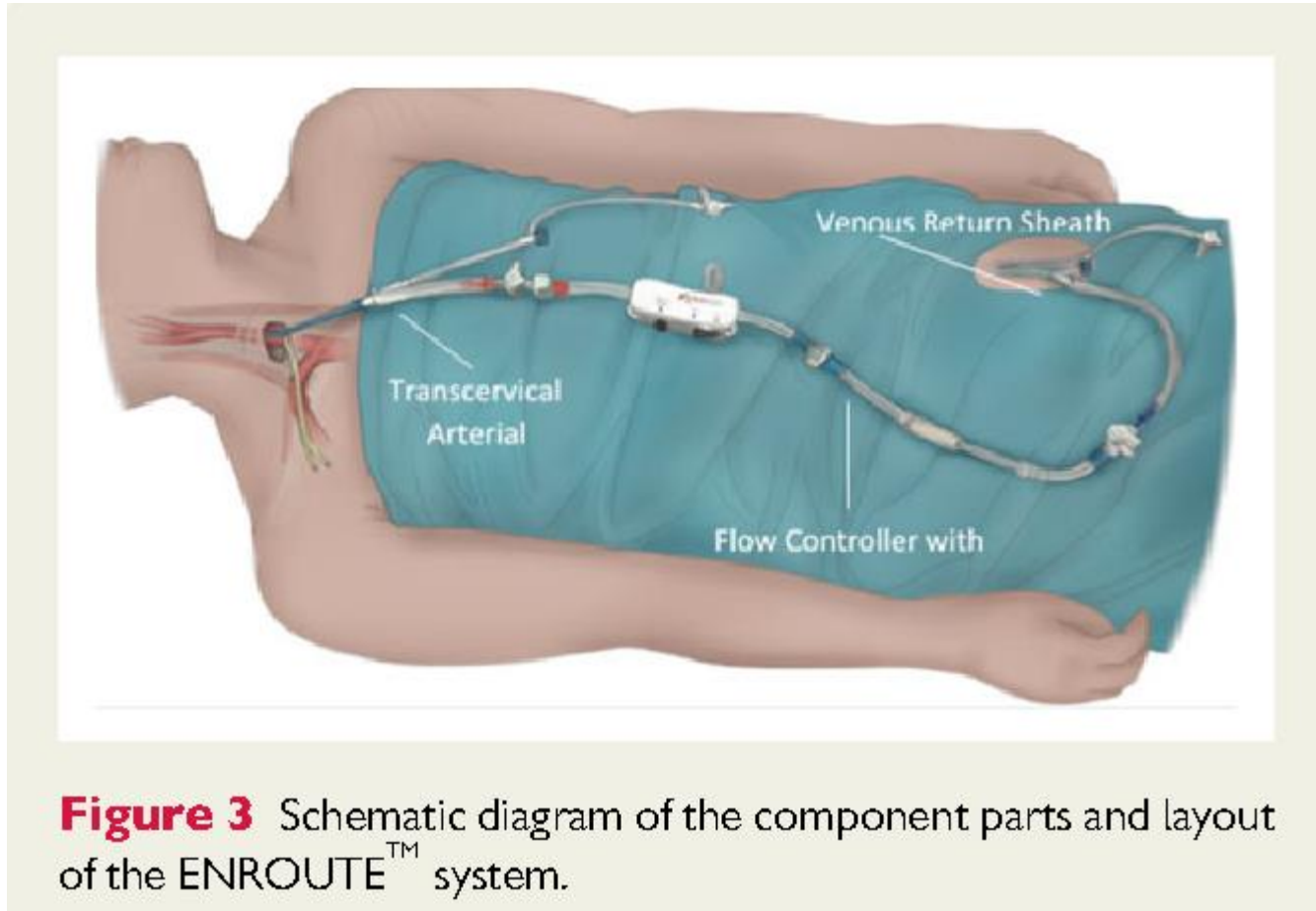
TRANS CAROTID ARTERY REPAIR OF PATCH + ANGIOPLASTY PSEUDOANEURYSM

- **Indications for Use:** The ENROUTE® Transcarotid Stent System used in conjunction with the ENROUTE Transcarotid Neuroprotection System (NPS) is indicated for the treatment of patients at high risk for adverse events from carotid endarterectomy, who require carotid revascularization and meet the criteria outlined below.
 - Patients with neurological symptoms and > 50% stenosis of the common or internal carotid artery by ultrasound or angiogram OR patients without neurological symptoms and > 80% stenosis of the common or internal carotid artery by ultrasound or angiogram, AND
 - Patients must have a vessel diameter of 4-9 mm at the target lesion, AND
 - Carotid bifurcation is located at minimum 5 cm above the clavicle to allow for placement of the ENROUTE Transcarotid NPS.

TRANS CAROTID ARTERY REPAIR OF PATCH + ANGIOPLASTY PSEUDOANEURYSM



TRANS CAROTID ARTERY REPAIR OF PATCH + ANGIOPLASTY PSEUDOANEURYSM



TRANS CAROTID ARTERY REPAIR OF PATCH + ANGIOPLASTY PSEUDOANEURYSM



TRANS CAROTID ARTERY REPAIR OF PATCH + ANGIOPLASTY PSEUDOANEURYSM



TRANS CAROTID ARTERY REPAIR OF PATCH + ANGIOPLASTY PSEUDOANEURYSM



TRANS CAROTID ARTERY REPAIR OF PATCH + ANGIOPLASTY PSEUDOANEURYSM

- A/C, hope arch heals, approach TF with Vbx.
- Ligation around proximal end of stent.
- Patient expired before follow-up



DISCUSSION

- Incidence of 0.5-1%
- Most commonly associated with infection.
- 1-18 years
- More common with patch vs. primary closure.